



Fall 2016
Newsletter #7

A BUSY SUMMER AT THE OL' MUSEUM!

During the Summer months we have been busy giving the Museum a face-lift! On the first floor, all of the displays were dismantled and packed away (one display at a time) and cleaning commenced! Our wonderful volunteers hung pegboard over all of the walls, took down shelves, hung heavy signs, and numerous other jobs— big and small. The entire first floor was painted, and the displays were reorganized into sections representing the birth of Earlville, Railroad, specific businesses, physicians, veterinarians, newspapers, etc. We had so many donated artifacts that were previously in storage which are now in full view for your enjoyment!

Once the main part of the Museum was completed, the small cleanup room was tackled. New cabinetry was installed to hold supplies and the walls were covered in order to keep the plaster from flaking. And, finally, the door to the second floor was stripped back to its original beauty and refinished.

Although the second floor had been spruced up last year, it was still in need of cleaning and organizing displays. The Wold Family placed on loan a bedroom and parlor set from their grandparents (Dr. A.C. and Loretta Tillman). Four generations of Tillman/Wold families have lived—and still live—in that house on the SW corner of Ottawa/Union St. The Military items were moved into their own room at the east end of the second floor, and other displays—including the Indian stories and artifacts—have been placed in the main room.

In addition to those improvements, we can't forget that we had to replace our Air Conditioner and Furnace back in July/August. None of this could have been possible without the support of you, our members and donors, and, of course, our invaluable volunteers!!

Thank You!!

MUSEUM

136 S. Ottawa St.
P.O. Box 683
Earlville, IL 60518

HOURS

Saturday 10am-2pm
Sunday 12pm-2pm
CLOSED JAN.-MAR.

Anytime by appointment
Call:
815-246-9778
815-246-9039
815-246-7076

www.earlvillehistory.org
earlville.history@yahoo.com

"Like" us on Facebook!



Meetings

Our last meeting of the year will be on Sat, Dec. 10th at 9a.m in the Museum. Whether you are a "regular" at our meetings or if you've never joined us before, please come and help us plan for our 2017 activities!

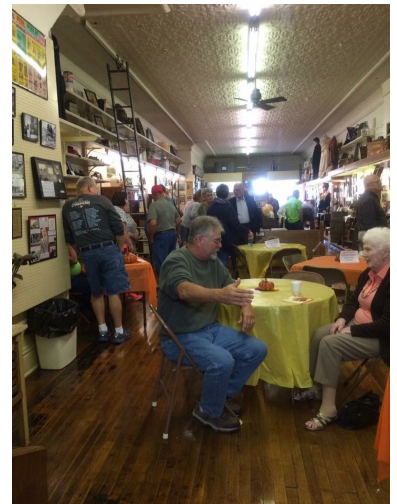
2017 Officers

Pres	Rich Goodbred
VP	Stan Meloy
Sec	Karen Wold
Treas	Carol Landers

OPEN HOUSE—NOVEMBER 8th

After everything was finally put back together following the facelift, we wanted to show off the changes to our members, neighbors and visitors. Approximately 100 guests joined us at our Open House on Sunday, November 8th. We treated them to some great homemade refreshments and punch along with a tour of both floors of the Museum. We are so thankful for the stair chairlift that was donated and installed compliments of the Robert and Theresa Lonie Family. It was operating nonstop this day!

The feedback that we received was very positive. We heard lots of stories as the guests made their way from display to display. The great thing about having people with “Earlville Roots” stop in is that it helps us add to the information that we have or correct information that we may have wrong. The BEST part, though, is taking that trip down Memory Lane with others as they tell stories of the past. Here are a few pictures from the day!



EARLVILLE BUSINESS ASSOCIATION BUSINESS RALLY!

Saturday, December 3rd
9am-12noon

Sign up for raffle drawings at each participating business.
Drawings will take place at 12noon.



CITY HALL

Earlville's first City Hall was built in 1884 on Winthrop St. in the current location of the Pioneer State Bank drive-through. The original blueprints show that the first floor contained the Police Magistrate, the Fire Engine, the City Council Chambers and the Library. Fanny Burlingame was the Librarian here for nearly 40 years.

The second floor was a large open space that included a stage, dressing room and orchestra pit. It was a beautiful old building with an ornate façade (bottom photo) described as "Italianate Style".



In 1894 a fire spread from the Thompson Livery Barn to the City Hall and partially destroyed it. In 1950 a survey was conducted asking the residents whether this site should be considered for the new Post Office. The residents overwhelmingly rejected that proposal.

In 1979 the building and surrounding land were purchased by the National Bank of Earlville and became the site for a new bank building.



YOUR 2017 ANNUAL DUES ARE DUE!

The Earlville Community Historical Society and the Museum stay alive through memberships, donations and fundraising activities. We are a not-for-profit organization, and we do not receive funding from any other source. It is only through your generosity that we can continue to make improvements to the Museum and preserve the history of our great little community.

Dues for 2017 are now being collected, so if you are an ANNUAL member (paying dues each year), it's time to renew! If you are already a Lifetime Member, this does not apply to you. We are grateful for all memberships and all donations, big and small!

Attached to this newsletter is a Membership Form. Please note that (after many years of no change) the dues have been increased this year. Please include the form with your check so that we can make sure that we have your information correct. If you have an email address, please be sure to include so that we can send you our newsletters electronically.

PRECINCT CEMETERY

MUSEUM

WINTER HOURS

Since the Christmas and New Years' holidays both occur on a weekend this year, the Museum will have its **LAST "scheduled" open hours on December 18th.** Like last year, the Museum will not have scheduled open hours during January, February or March.

HOWEVER, we are ALWAYS happy to open it up at any time by appointment. Just call and we'll set up a time convenient to you!

815-246-9778

815-246-9039

815-246-7076

Did you ever wonder why the Earlville cemetery south of town is called the "Precinct" cemetery? In 1844 an early settler built a log cabin on the NE corner of the property that is currently the cemetery. This was referred to as the Precinct School House. The cabin was the site for the first educational classes, church gatherings and also served as the precinct polling place (hence the name, Precinct Cemetery). Parts of the foundation of the cabin are still there.

The NW corner of the cemetery is referred to as "Potters' Field." Buried here are the poor, unclaimed or unidentified bodies of those early days. There are no headstones or other visual means of identifying the graves.

Although burials began before this date, the following was noted in the Earlville Gazette (July 18, 1873)

"That careful man, J. Denis Rogers, while Supervisor some years ago, deemed it prudent to keep an official record of the burial place of departed citizens. The date of a person's death sometimes unexpectedly becomes an important piece of evidence, involving someone's rights and happiness, years afterwards. The Precinct Cemetery was surveyed and platted; it was divided into a North and a South Division, each division staked out in ranges and these subdivided into family lots. A list of those already buried was searched out and recorded in a book provided; the cemetery was put in tidy repair, a tool house built, and the service of Uncle James McGregor, who lives near, secured as Sexton for \$25 per year. He keeps a record of the names, date and place of burial".

"Last week the old Sexton brought in his book, being the first time since we posted it May 2d, 1871. During the 2 years and 2 months, we find there have been 46 burials, an average of one in 17 days. Of these, 7 were men, 14 women and 25 children. To continue the cold-blooded figures a little farther, in the average one man has died in every 112 days, one woman every 61 days and one child every 33 days".



IF YOUR HOUSE COULD TALK....!



One of our current projects includes finding original pictures, history and occupants of some of the older homes in Earlville. If you have information or photos of an older house that you lived in, please email us: earlville.history@yahoo.com

We are particularly interested in information and/or pictures of the D.A. Town home that was located *on the SW corner of Ottawa and Winthrop? It was torn down before Dodge Park was developed.

Mark Your Calendars!!!

Earlville Community Historical Society

PRESENTS

(back by popular demand!)



DUELING PIANOS!

Saturday, April 22, 2017

Earlville Fire Station

Calendar of Events



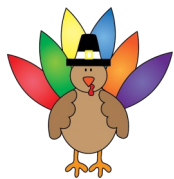
- Dec. 3 EBA Business Rally (9a-12N)
- Dec. 10 ECHS Mtg (9am)
- Dec. 18 Last day that the museum is scheduled to be open until April 2017. Anytime by appt!



MEMBERSHIP UPDATE

	2014	2015	2016
TOTAL MEMBERS	87	95	112
Annual Members	46	32	32
Lifetime Members	41	63	80

The Earlville Community Historical Society would like to thank our 2016 officers for accepting their office again for 2017. Why mess with success, right!? We'd also like to welcome Bill Mitchell as a new Director. Bill joins our other Directors, Tracy Smith and Bruce Carter. ECHS extends a HUGE Thank You to Doug Corrigan who has served as Director for many years. His contributions to the organization and the Museum are many, and we are grateful for his continued support!



Happy Thanksgiving

Merry Christmas

Happy New Year

From your friends at the Earlville Community Historical Society!

Earlville Community Historical Society

A Not-For-Profit 501(c)3 Organization

MEMBERSHIP FORM

New Member

Renewal

Membership Type/Dues (after initial payment, dues are collected each Nov/Dec for following year)

Individual (\$15.00 *per person* - annually)

Business/Institution (\$50.00 annually)

Family (\$30.00 annually)

Individual Lifetime (\$150 *per person* - one-time payment; no annual dues)

Business/Institution Lifetime (\$300 – one-time payment; no annual dues)

Member Information

Name(s) _____

Address _____

City/State/Zip _____

Phone _____ Email Address* _____

**To avoid postage costs we would like to send newsletters to your email account.*

Do you have a Facebook Account? Yes/No

If yes, please “like” our Facebook page by searching for:

Earlville Community Historical Society

Send this form and your dues to the following address:

Earlville Community Historical Society

Attn: Membership

136 S Ottawa St.

PO Box 683

Earlville IL 60518

Eff. 11/11/2016