

2020 Calendar Sales!!

Within the next month we will be ordering the 2020 calendar with more vintage pictures of Earlville. This year the calendar will be focusing more on “people” as well as “places” and will contain more description with each photo. One month will be dedicated to local veterans, another month will feature Earlville homes that were built in the 1800s and still standing. This is our third year of publishing the calendar, and it continues to be a great fundraiser for us.



The cost will be the same as last year—\$15 each. If you want to have the calendar(s) mailed there is a \$2 per calendar shipping fee. They make great Christmas gifts. We have sold out the first 2 years, so if you wish to order, don’t wait until the last minute!

You can pre-order by email (earlville.history@yahoo.com) as long as you follow-up with a check or money order sent to ECHS, PO Box 683, Earlville, IL 60518. Or, stop by the Museum during our business hours on the weekends and place your order. We will send you an email when they come in (October 1st) so that you can stop by and pick it up (or we will send via mail per your instructions).

MUSEUM

136 S. Ottawa St.
P.O. Box 683
Earlville, IL 60518

HOURS

Saturday 10am-2pm
Sunday 12pm-2pm
CLOSED JAN.-MAR.

Anytime by appointment
Call:
815-246-9778
815-985-3763

www.earlvillehistory.org
earlville.history@yahoo.com

“Like” us on Facebook!



Meetings

Our meetings are currently being held at 9am on the first Saturday of every month. Next meeting will be Sat. Jun. 1st, at the Museum.

2019 Officers

Pres	Rich Goodbred
VP	Stan Meloy
Sec	Karen Wold
Treas	Kris Goodbred

Directors:	Bill Mitchell
	Larry Maly
	Sandi Engel

Thank
you!

The Museum could not exist without the help of these and countless other volunteers!

- Jack Anderson for creating new workspace and frame storage in the office
- Larry Maly and Norm Peterson for installing new lighting and fan in Military Room.
- Ron Goodbred, Larry Maly, Rich Goodbred, Kent Sellers, and Jack Anderson for helping to rearrange, clean out and dispose of items from second floor
- For all of our weekend volunteers who give their time, clean up, take out garbage, etc.
- Sandi Engels for helping with the August presentation, and LaVerle Carter for offering to present at our September meeting.
- Mike Roberson for helping us (and Keegan) with military information.
- American Legion for the podium used in our military display.



.....are always needed and welcomed!

If interested in lending a hand and learning about Earlville please contact us at:

earlville.history@yahoo.com

Calendar of Events



Sep. 7	ECHS Meeting
Sep. 11	"Paint and Sip Party"
Oct. 5	ECHS Meeting
Nov. 2	ECHS Meeting
Dec. 1	EBA Christmas Festival
Dec. 7	ECHS Meeting

EHS Student Volunteer!

For the first time this summer we were thrilled to have an EHS student , Keegan Bottoms, volunteer his time at the Museum. He is particularly interested in military history and was able to help by writing up summaries of the major conflicts, scan military pictures and research

websites to give us information on veterans. This will be a big help when we get ready to reorganize our military display on the second floor. Keegan is also very tall which came in very handy when reaching

for items up high! Keegan will be a sophomore at EHS this fall and logged in more than 48 hrs of service Thanks so much! Hope to see you next summer!



Program at Stonecroft Village

On September 9th Kris and Anna will be "hitting the road" and traveling to Stonecroft Village in Mendota to present a program and information on the Museum. If you have an organization or club that would be interested in hearing more about the history of Earlville and ECHS, just drop us an email or give us a call!

Precinct Cemetery

The cemetery in Earl Township is located south of town on the Harding blacktop. The property for the cemetery was donated by the Carter family in 1841, and the first grave was for a Carter family member that same year. The Cemetery was dedicated in 1843 and named "Precinct" cemetery because it was previously the site of voting. In 1873 the cemetery was surveyed and platted. A list of persons already buried there was recorded, and the following report was given to the city at that time: "In a 2 year period of time there have been 46 burials, and average of one in 17 days. Of these, 7 were men, 14 women and 25 children. To continue the cold-blooded figures a little farther, in the average one man has died in every 112 days, one woman every 61 days, and one child every 33 days."

The Carter Mill, located on Indian Creek just north of the cemetery, operated from 1866 until it burned on May 15, 1870. The mill stones were originally brought from New York by wagon pulled by oxen. Before this mill was built, the only mill within a hundred miles was in Dayton, IL. The millstones were donated to the township in 2007 by the Bruce and Forrest Carter families and are on display at the entrance.



(continued on page 4)

Calling all Veterans!



If you or your family members are from Earlville and served in any branch of the military, we would love to have a picture of you in uniform. Pictures can be scanned and sent to our email address (earlville.history@yahoo.com) or sent to us by mail at PO Box 683, Earlville, IL 60518. If you wish to have the picture returned to you we can scan it and return. We would like the following information if you have it and where applicable —full name, branch of service, dates of service, conflict, location, rank and any other information that you'd like to include.

Some Recent Donations..

- Howard Gast Family—Military uniform, high school sweater, and other items
- Rich Goodbred—Bricks from the Sutphen house
- Bob Jornlin—replicas of WWII US and Japanese ships used by Naval Intelligence to study and identify enemy vessels

Precinct Cemetery

(continued from page 3)

Have you ever heard the term “potter’s field”? The dictionary defines it as “a piece of land used as a burial place for indigent people, the poor or unidentified at the expense of the community.” Most cemeteries (including Precinct) have an area designated as potter’s field, but you probably wouldn’t know where it was located since there are no stones or markers in that area. The potter’s field area at Precinct Cemetery is in the far NW corner.



The origin of potter’s field actually comes from the Bible (Matthew Chapter 7). Judas tried to return the money that the High Priests had given him to betray Jesus, but they couldn’t take it since it was considered “blood money.” Instead, it was used to purchase land to bury foreigners. The land was rich in clay and was purchased from a pot-maker—hence the name, potter’s field. It was already conveniently filled with trenches and holes. The actual site of the first potter’s field was in Jerusalem. During the 1500s the word, “potter” was used to refer to itinerant, peddler or vagrant.

New York’s potter’s field is one of the largest cemeteries in the United States. Nearly 1 million people are buried there. It is only accessible by boat. New York City’s Dept. of Corrections oversees the cemetery. Today the task of burying bodies has fallen to prisoners who are ferried back and forth.

Records show that 33 persons are buried in potter’s field at Precinct Cemetery. Among those are a father and son who were burned to death in a house fire, 5 railroad workers including a black man who died as a result of a train crash, a woman who was abused as a child and taken in by people of the town, and 6 whose death was listed as suicide (2 of those were members of the same family). Some had complete names where others were simply described with a first name, last name, initial or description such as “tramp.”

The Historical Society is working with the Precinct Cemetery Board in an effort to clean up the area designated as potter’s field. We hope to eventually purchase a monument to honor those who are buried there.

Plan to join us at one of our monthly meetings! You’re bound to find out something interesting about Earlville that you never knew before!



THREE LOCAL BUSINESSES CELEBRATE MILESTONES!



Earlville County Club—We are recognizing the Earlville County Club this year in honor of its 90th anniversary! A group of 30 men including doctors, lawyers, businessmen and farmers got together in 1928 to investigate the feasibility of bringing golf to Earlville. The original concept was much more than a golf course. It was to become a “recreation” area for the community and was eventually to include a swimming pool, ice skating rink, tennis courts and a 3-4 hole golf course. We know *that* plan didn’t come to fruition, however, the idea of a golf course continued to pick up interest.

Originally, Number 1 Tee off was on the bluff above the creek and in Dr. Rayson’s (later Yabsley’s) back yard. The first greens were just flat mown surfaces with a flag made out of a fishing pole with a rag tied to it . In order to generate more interest people were invited to play free of charge. At a gathering in late fall of 1928, nearly 1000 people attended to learn more. Attendees were invited to purchase \$15 memberships, and enough money was collected to build 6 holes instead of 3!



This project was undertaken at the beginning of the Great Depression. In 1929 additional land was purchased, and a 9 hole course was laid out by a professional from Fox Valley Country Club (Joe Meister). At a 1929 Board Meeting the annual “membership” was set at \$15. Green fees were set at \$.50. Membership was limited to 100 in the beginning. At the end of the first official year (1929) a deficit of \$12-\$13 was noted. According to the board minutes “The money was promptly donated by the board members present disposing of this item.” During the Depression the course barely broke

even and survived only through the dedication of the directors and members. At one time each stockholder was asked to donate \$5 just to keep the course open. The Board secured loans amounting to \$2500 from Ralph Dodge in order to keep the golf course afloat. In times when they could not make their payment to him, he would reply that there “was no rush”. When he died in 1935 his will stated that the loan was to be forgiven. Earlville Country Club continues to be a “hidden gem” of our community. But, golf courses all over the state and nation are facing many challenges and membership has been on the decline. Fees have to be raised to accommodate the costs of chemicals and regulatory requirements, certifications, and machinery. Part of the beauty of ECC is the Indian Creek which winds through the course. That “beauty” becomes costly when it floods. Hopefully, we’ll all be around to celebrate the 100th anniversary in 2029! If you haven't golfed the course lately, fall is a great time to come out and play! *(continued on page 6)*



PAINT & SIP!



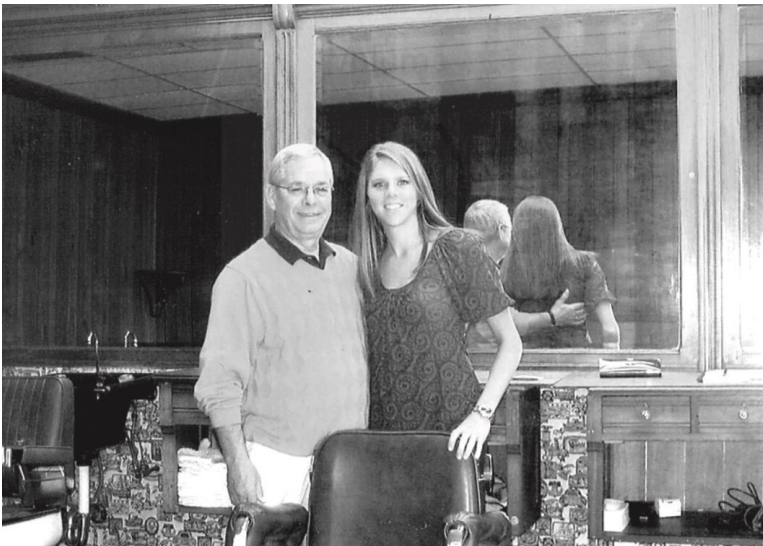
There are still openings for our Paint & Sip party hosted by artist, June Bartotto, on Wed., Sep. 11 at 6:30pm. Cost is \$30. June is donating part of the fee to ECHS! If you are interested in joining us, drop an email to earlville.history@yahoo.com or call Kris at 815-252-9380.

MUSEUM NEEDS.....

- Wigs for female and male mannequins
- Military pictures, stories
- Photos of the Lyric Theater and the Maple Leaf Park swimming area

(continued from page 5)

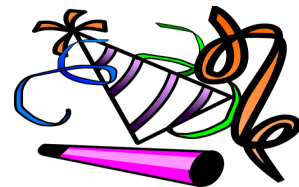
Sandy's Shear Magic— Although she has been in the salon business a bit longer, Sandy Cox is celebrating 30 years in her downtown location at 127 W Railroad St. Sandy is an active member of the Earlville Business Association and involved in any event that promotes Earlville. She and her staff hosted an Open House on August 30th at the salon in honor of the anniversary. Just a side note—Sandy's mom, Dottie, was a driving force in creating our local Museum.



The Barber Shop—Stacy Stegman Grey is celebrating 10 years in business at The Barber Shop. She purchased the shop from Jack Landers in 2009 and continues to operate in the same well-known location, 121 S Ottawa St. She has made some nice updates to the barber shop this past year.

Congratula-

tions, Stacy!



You NEVER know what you might find...!

While we were scanning military pictures this summer we unearthed something unexpected behind Keith Harris' photo. Margie had evidently used a cardboard display of coins produced during WWII as backing in the frame. Copper and nickel were critical to the war effort so other metals were substituted. Wartime "nickels" were made of copper, silver and manganese. Pennies were made out of zinc-coated steel and later out of salvaged cartridge cases. The "emergency coinage" was produced 1942-1945 and can be distinguished by the "P" signifying the first time that the Philadelphia mint was used. When we notified the Harris family they told us to make them part of our military display! Thanks so much!



Earlville Community Historical Society

A Not-For-Profit 501(c)3 Organization

MEMBERSHIP FORM

New Member

Renewal

Membership Type/Dues (after initial payment, dues are collected each Nov/Dec for following year)

Individual (\$15.00 *per person* - annually)

Business/Institution (\$50.00 annually)

Family (\$30.00 annually)

Individual Lifetime (\$150 *per person* - one-time payment; no annual dues)

Business/Institution Lifetime (\$300 – one-time payment; no annual dues)

Member Information

Name(s) _____

Address _____

City/State/Zip _____

Phone _____ Email Address* _____

**To avoid postage costs we would like to send newsletters to your email account.*

Do you have a Facebook Account? Yes/No

If yes, please “like” our Facebook page by searching for:

Earlville Community Historical Society

Send this form and your dues to the following address:

Earlville Community Historical Society

Attn: Membership

136 S Ottawa St.

PO Box 683

Earlville IL 60518

Eff. 11/11/2016